

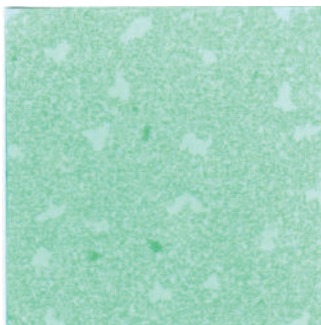
TRANSIT CLASSIC™

gerflor.com

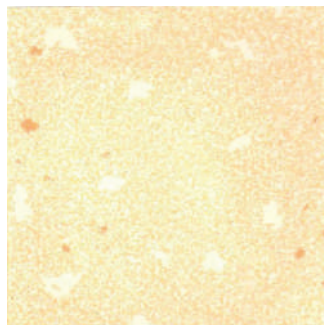


Gerflor[®]
theflooringgroup

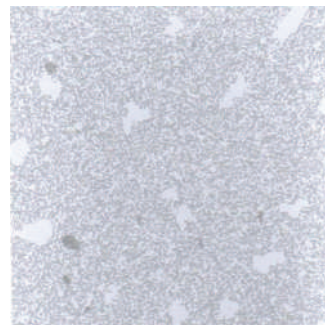
COLUMBO



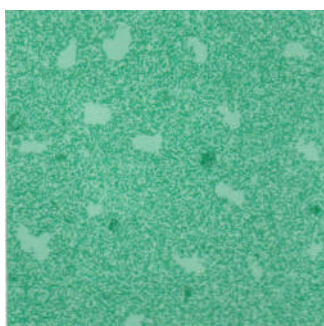
0207 Ficus



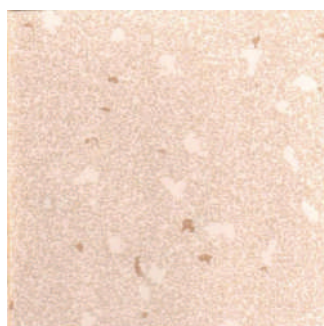
0203 Lin



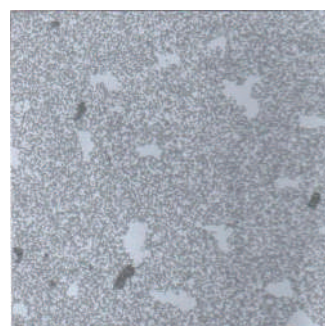
0211 Chrome



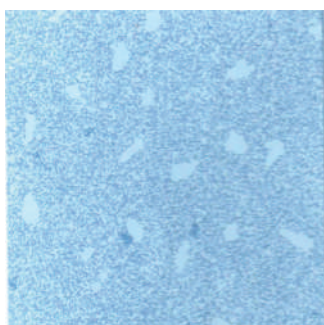
0208 Green



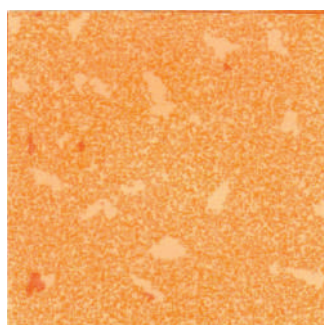
0201 Bruyere



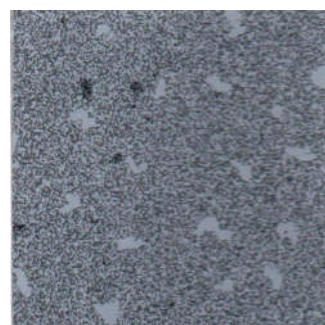
0210 Jais



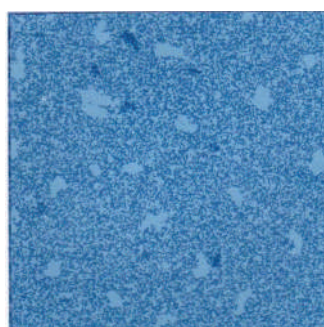
0205 Myosotis



0204 Orange



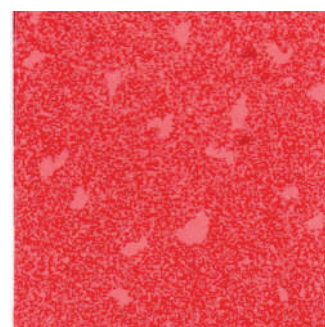
0209 Ebene



0206 Dark blue



0202 Mid brown



0212 Red



TEXTURA



0309 Ash



0303 Chocolat



0301 Lagon



0310 Acier



0304 Cream



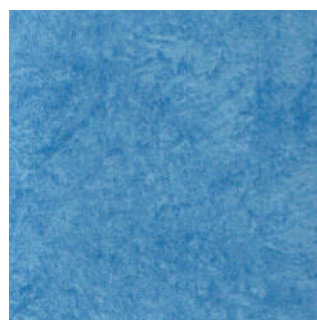
0302 Forest



0311 Smoke



0306 Gold



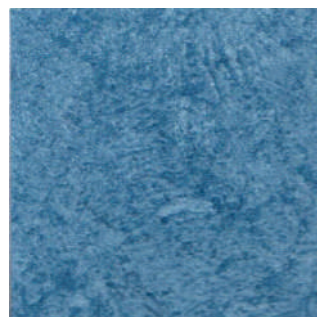
0307 Ciel



0312 Ruby



0305 Cappuccino





0308 Ocean



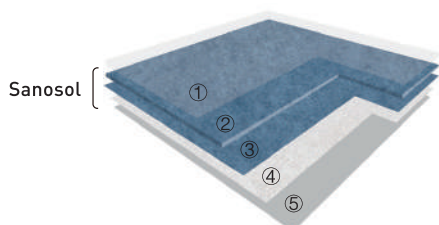
* Weld rod available

TRANSIT CLASSIC™




 2 m	23-31	PUR Protect	Sanosol	 100% recyclable
--	-------	-------------	---------	---

TEXTURA / COLUMBO / WOOD



- ① PUR Protect surface treatment
- ② Transparent wear layer
- ③ Printed design
- ④ Fiber glass reinforced layer
- ⑤ Compact back layer

- PUR Protect surface treatment with high resistance to scratching, scuffing & easy cleaning.
- Sanosol treated throughout the thickness to prevent bacterial and fungicidal contamination.
- Transparent wear layer with printed designing, highest durability.
- No DOP, no heavy-metal, no benzene, no formaldehyde & 100% compliant with REACH, friendly to health and environment.
- Compact backing with fiber glass reinforced layer. High resistance to static and dynamic perforation under rolling loads, and excellent dimensional stability.
- Recommended for education, office, retail, hospital and institutional buildings.

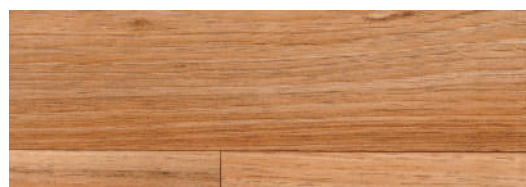
 Compact sheet, without foam backing

WOOD



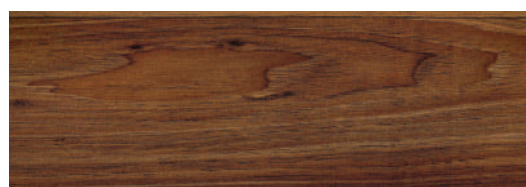

6.6 cm

0401 Frontenac-Light yellow




10 cm

0501 Walnut-Yellow grey




10 cm

0502 Walnut-Dark brown



TRANSIT CLASSIC™ TEXTURA / COLUMBO / WOOD is a multilayered compact vinyl floor covering, available in 2m width sheet, with a group T wear rating. The product comprises a printed design protected by a transparent wear layer, and a compact backing with fiber glass reinforced layer, which resists static and dynamic perforation under rolling loads and provides excellent dimensional stability.

TRANSIT CLASSIC™ TEXTURA / COLUMBO / WOOD is treated with PUR Protect surface treatment with high resistance to scratching, scuffing & easy cleaning, and Sanosol treated throughout the thickness to prevent bacterial and fungicidal contamination. It has no DOP, no heavy-metal, no benzene, no formaldehyde & 100% compliant with REACH, which is friendly to health and environment, recommended for education, office, retail, hospital and institutional buildings.

INSTALLATION

Installation should be carried out in accordance with local standards. Subfloor should be smooth, hard, clean and dry prior to laying. Where applicable the subfloor must incorporate an effective Damp Proof Membrane. The material must be allowed to acclimatize 24 hours before installation in a room temperature of between 18-24°C. All seams must be hot welded using Gerflor® matching welding rod.

MAINTENANCE

No acrylic emulsion (wax) is needed right after installation. Maintenance should be carried out regularly to retain the appearance and durability of the floor. The floorcovering should be maintained with regular sweeping and damp mopping using a neutral cleanser. More intense cleaning should be carried out using a fine spray cleaning pad under a floor machine, or for larger areas combined machine cleaning.

Rubber leaves indelible stains on vinyl flooring: do not use mats with rubber backing and replace tubular furniture feet with those made of PVC or polyamide.

TEXTURA / COLUMBO / WOOD

DESCRIPTION

Total thickness	EN 428	mm	2.0
Thickness of wearlayer	EN 429	mm	0.3
Weight	EN 430	g/m ²	3150
Width of sheet	EN 426	cm	200
Length of sheet	EN 426	lm	20

CLASSIFICATION

Norm / Product specification	-	-	EN 649
European classification	EN 685	class	23-31
Fire rating (EN)	EN 13 501-1	class	Bfl-s1
Static electrical propensity	EN 1815	KV	< 2
Slip resistance wet	DIN 51 130	class	R9

PERFORMANCE

Abrasion resistance	EN 660.2	mm ³	≤ 2
Abrasion group	EN 649	group	T
Dimensional stability	EN 434	%	≤ 0.4
Residual indentation	EN 433	mm	≤ 0.1
Castor chair test	EN 425	-	OK
Thermal conductivity	EN 12 524	W/(m.K)	0.25
Colour fastness	ISO 105 - B02	degree	≥ 6
Chemical products resistance	EN 423	-	OK
Anti-bacterial and fungicidal	-	-	Sanosol
Surface treatment	-	-	PUR Protect
Anti-bacterial activity [E.coli - Saureus - MRSA] ⁽¹⁾	ISO 22196	-	> 99% inhibits growth

ENVIRONMENT / INDOOR QUALITY AIR

TVOC after 28 days	ISO 16000 - 6	µg/m ³	< 100
Certification	-	-	Floorscore™

CE MARKING CE

CE	EN 14041	
----	----------	--

(1) The implementation of an effective cleaning regime is the most important defence against infections.

JUN 2016-06-15 Version-Indicative documentation cost USD 3.3
Gerflor® has a policy of continuous product improvement, it reserves the right to change design and specifications without notice.



Committed to sustainable development



GERFLOR ASIA Tel. : + 86-21-63578818