

RESPONSIVE

We listen. We're responsive.

Capilla®

Wall Covering

2018



Special Features



CERTIFIED BY
SCS Global Services

Applications

- Hospitals
- Laboratories
- Clinics
- Classrooms
- Hallways
- Dormitories

Product Description

Capilla® is a homogeneous flexible vinyl wall covering available in 1.00 mm thickness, designed to be fully resistant to impact. Capilla acts as a buffer against damage from beds, trolleys and indoor motorised vehicles or other transportation systems.

Capilla® is fully impact resistant and is therefore ideal for use as a cladding in large public buildings such as hospitals, care institutions, dental and veterinary surgeries, clean rooms, stores and supermarkets, warehouse and storage areas.

Capilla® is anti-fungal and anti-bacterial, is available in sheets 2.0m wide and complies with the European norm EN 649.

Capilla® is VOC (≤ 12 Chronic REL) and formaldehyde compliant ($\leq 9.0 \mu\text{g}/\text{m}^3$) according to the CDPH/EHLB/Standard, Method V1.1-2010 (certificate 120316-01).

Capilla®

Wall Covering



Lateral Thinking

Hygienic, crisp, clean, and easy - Capilla® is the preferred wall covering choice for tough professional environments. With pleasing pastel designs, Capilla® is the perfect complement for Responsive's extensive vinyl flooring collection.



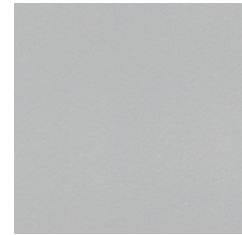
Vanilla Ice

9939-379-4



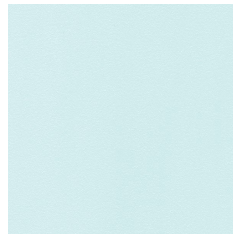
Ice Crystal

9939-372-4



Dark Moon

9939-375-4



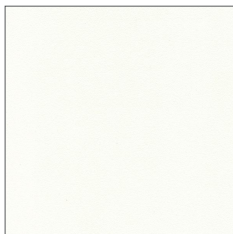
Light Blue

9939-383-4



Soft Jade

9939-384-4



Light Cream

9939-382-4



Milkshake

9939-380-4

Matching welding rods are available for every colour.

Printed shades may appear slightly different from actual samples.

Capilla®

Wall Covering



Characteristics	Standards	Units	Capilla®
Indoor Air Quality	CA Section 01350 ($\leq 0.5 \text{ mg} / \text{m}^3$)	Floorscore Certified (SCS - FS - 04547)	Yes
Description			
Type of wall covering	EN 15102	Classification Norm	Vinyl Wall Covering
Special treatment			PUR
Overall thickness	ISO 24346 - EN 428	mm	1.00
Thickness of wear layer	ISO 24340 - EN 429, ASTM F410	mm	1.00
Weight	ISO 23997 - EN 430	g/m ²	2000
Sheet size	ISO 24341 - EN 426	m (width)	2
		m (length)	20
		m ² (surface area)	40
Dimensional stability	ISO 23999 - EN 434	%	≤ 0.40
Flexibility	ISO 24344 - EN 435	20mm mandrel	< 20
	ASTM F137		Pass
Seam Strength	ISO 16906	N/50mm	Pass
Residual indentation	ISO 24343 - 1 - EN 433	mm	≤ 0.10
Colour fastness to light	EN ISO 105 - B02	Degrees	≥ 6
	ASTM F1515	$\Delta E \leq 800$ after 300 hours (colour change)	Pass
Heat Stability	ASTM 1514	$\Delta E \leq 0.80$ (colour change)	Pass
Reaction to fire	EN 13501-1 : 2007+A1	Class	Bfl - S1
	ASTM E 648	Type	1
Smoke density	ASTM E 662	Dm	< 450
Stain & chemical resistance	ISO 26987 - EN 423	Index	0 (Excellent resistance)
	ASTM F925	Resistance	Pass
Fungi & bacteria resistance	ISO 846 A, C		Does not favour growth

